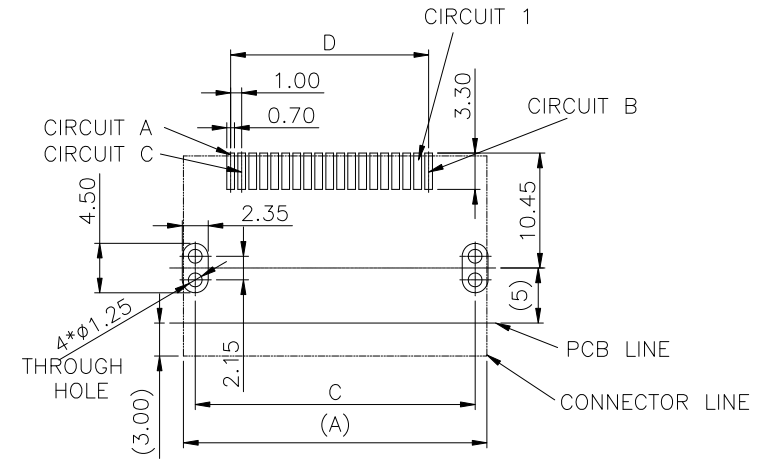
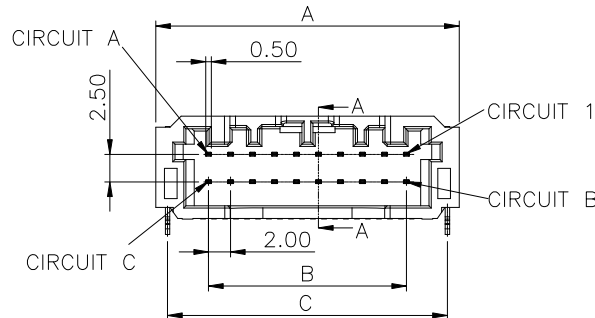
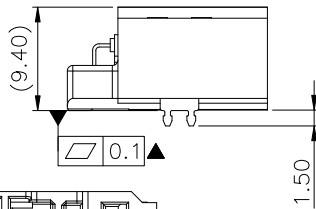
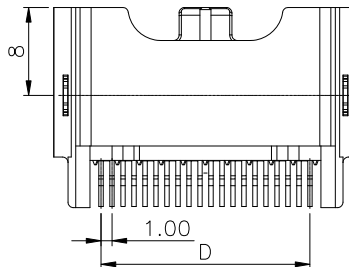
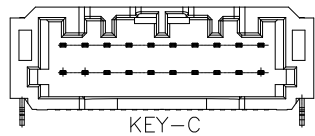
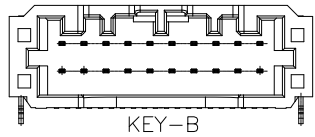
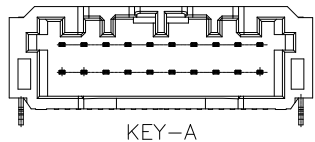


| PIN NO. | A | B | C | D |
|---------|------|-------|-------|-------|
| 8 | 15.6 | 6.00 | 13.45 | 7.00 |
| 12 | 19.6 | 10.00 | 17.45 | 11.00 |
| 16 | 23.6 | 14.00 | 21.45 | 15.00 |
| 20 | 27.6 | 18.00 | 25.45 | 19.00 |
| 24 | 31.6 | 22.00 | 29.45 | 23.00 |
| 28 | 35.6 | 26.00 | 33.45 | 27.00 |
| 32 | 39.6 | 30.00 | 37.45 | 31.00 |
| 40 | 47.6 | 38.00 | 45.45 | 39.00 |



PCB THICKNESS :1.6mm
TOLERANCE:±0.05
(TOP VIEW)

CIRCUIT A=N/2
CIRCUIT B=N/2+1
CIRCUIT C=N
N=PIN NO.



NOTES:
VOLTAGE RATING: 60V AC/DC MAX.
CURRENT RATING: 3A AC/DC(HIGHER CURRENT RATING ACHIEVABLE,CONTACT SALES FOR ADDITIONAL TECHNICAL INFORMATION)
WITHSTANDING VOLTAGE: 500V AC/MINUTE
TEMPERATURE RANGE: -40°C ~+125°C
INSULATION RESISTANCE: ≥100MΩ
CONTACT RESISTANCE: ≤10mΩ
AFTER ENVIRONMENTAL TESTING: ≤30mΩ
APPLICABLE BJD HOUSING: 14111X-02XX08

14111X-21XX10

08: 8PIN
12: 12PIN

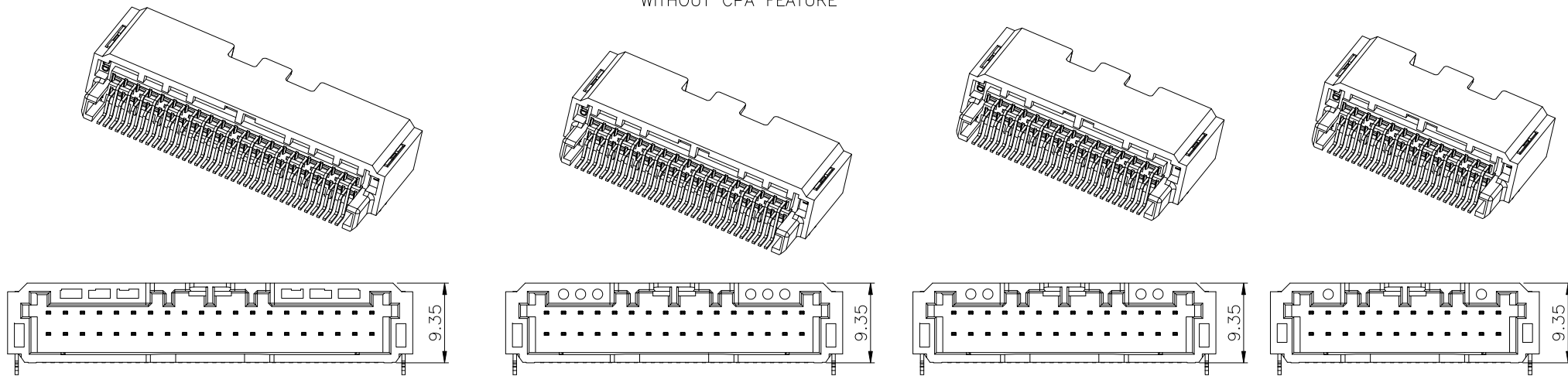
- 1: KEY-A W/O CPA FEATURE
- 2: KEY-B W/O CPA FEATURE
- 3: KEY-C W/O CPA FEATURE
- 4: KEY-A WITH CPA FEATURE
- 5: KEY-B WITH CPA FEATURE
- 6: KEY-C WITH CPA FEATURE

| | | | | |
|------|---------------|------|--------------|------------------------------|
| ④ | SOLDERING PIN | 2 | COPPER ALLOY | MATTE TIN PLATED OVER NICKEL |
| ③ | CONTACT PIN | N/2 | COPPER ALLOY | TIN PLATED OVER NICKEL |
| ② | CONTACT PIN | N/2 | COPPER ALLOY | |
| ① | HOUSING | 1 | PPS BLACK | |
| ITEM | PART NAME | Q'TY | MATERIAL | FINISH |

| | | | | UNLESS OTHERWISE SPECIFIED TOLERANCES ARE | |
|-----|-------------------------|-----|------------|---|-------|
| | | | | X. | |
| | | | | X.X | ±0.30 |
| | | | | X.XX | ±0.20 |
| | | | | X.XXX | |
| | | | | ANG. | ±2' |
| X1 | UPDATE THE C DIMENSIONS | Jay | 2022-10-15 | | |
| X0 | INITIAL REVISION | Jay | 2022-04-22 | UNIT | |
| SER | REVISIONS | CHK | DATE | MM | |

| 客户图 | | 北极大电子科技有限公司 | | | | |
|----------|------------|--|-------|-------|-----|--|
| Drawings | | BEIJIDA ELECTRONICS TECHNOLOGY CO. LIMITED | | | | |
| APPROVED | DATE | PART NO | | | | |
| Jay | 2022-04-22 | 14111X-21XX10 | | | | |
| CHECKED | DATE | NAME | | | | |
| Jay | 2022-04-22 | 2.00mm R/A SMT WAFER | | | | |
| DRAWN | DATE | SIZE | SCALE | SHEET | REV | |
| Bob | 2022-04-22 | A4 | 1.5:1 | 1/3 | X1 | |

WITHOUT CPA FEATURE

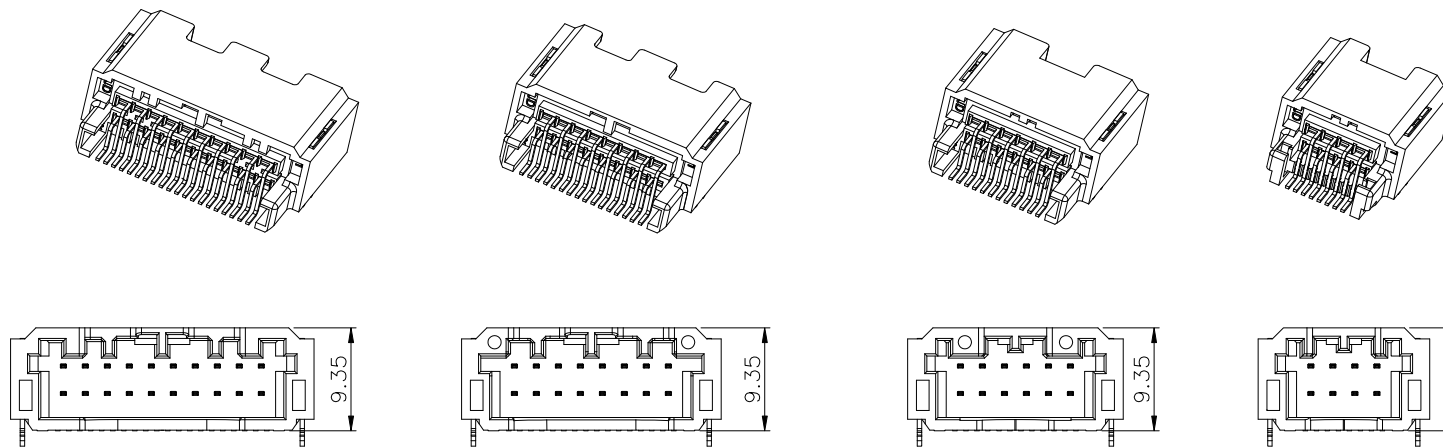


40 PIN

32 PIN

28 PIN

24 PIN



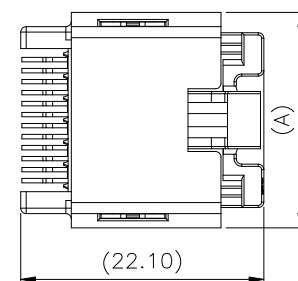
20 PIN

16 PIN

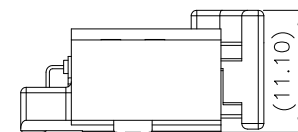
12 PIN

8 PIN

MATED DIMENSION



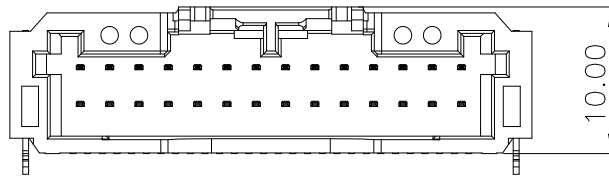
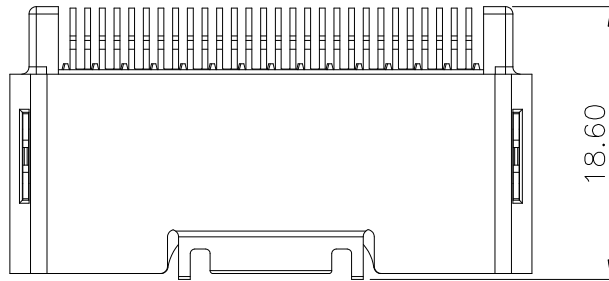
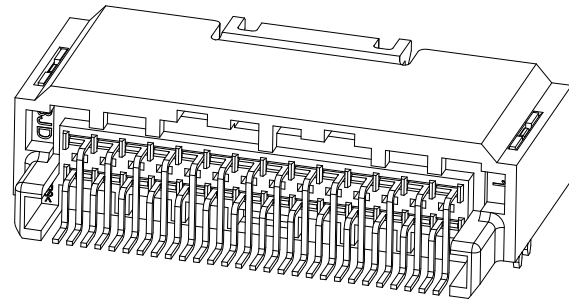
8-12 PIN



16-40 PIN

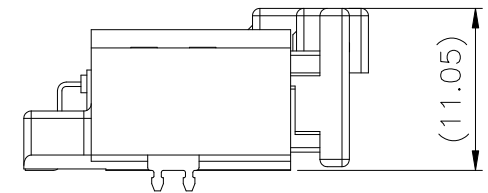
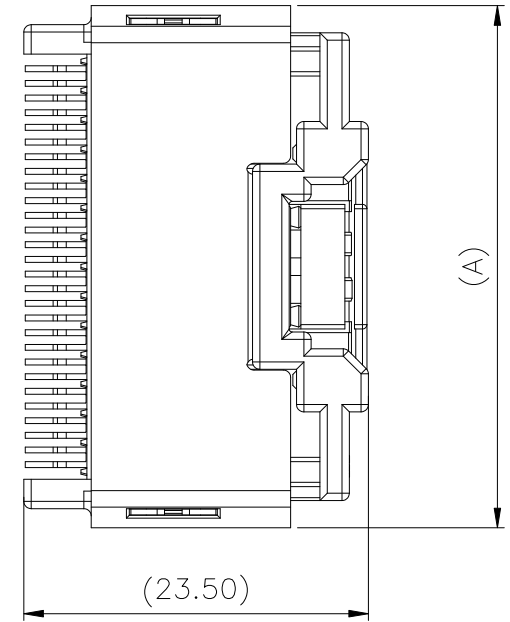
| | | | | | | | | | | |
|-----|-------------------------|-----|------------|---|-----------------|---|----------------------|-------|-------|-----|
| | | | | UNLESS OTHERWISE SPECIFIED TOLERANCES ARE | 客户图 Drawings | 北极大电子科技有限公司 BEIJIDA ELECTRONICS TECHNOLOGY CO. LIMITED | | | | |
| | | | | X. | APPROVED | DATE | PART NO | | | |
| | | | | X.X ±0.30 | Jay | 2022-04-22 | 14111X-21XX10 | | | |
| | | | | X.XX ±0.20 | CHECKED | DATE | NAME | | | |
| | | | | X.XXX | Jay | 2022-04-22 | 2.00mm R/A SMT WAFER | | | |
| | | | | ANG. ±2' | DRAWN | DATE | SIZE | SCALE | SHEET | REV |
| X1 | UPDATE THE C DIMENSIONS | Jay | 2022-10-15 | | Bob | 2022-04-22 | A4 | 1.5:1 | 2/3 | X1 |
| X0 | INITIAL REVISION | Jay | 2022-04-22 | UNIT | | | | | | |
| SER | REVISIONS | CHK | DATE | MM | | | | | | |

WITH CPA FEATURE



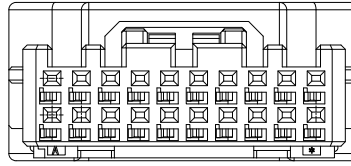
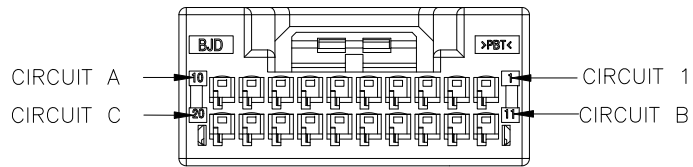
16-40 PIN

MATED DIMENSION

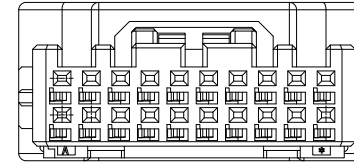


16-40 PIN

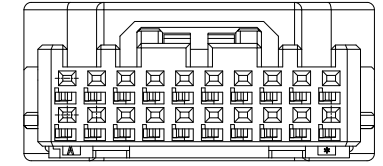
| | | | | | | | | | | | |
|-----|------------------|-----|------------|---|----|-----------------|--|---|--|----------------------|--|
| | | | | UNLESS OTHERWISE SPECIFIED TOLERANCES ARE | | 客户图 Drawings | | 北极大电子科技有限公司 BEIJIDA ELECTRONICS TECHNOLOGY CO. LIMITED | | | |
| | | | | X. | | APPROVED | | DATE | | PART NO | |
| | | | | X.X ±0.30 | | Jay | | 2023-07-22 | | 14111X-21XX10 | |
| | | | | X.XX ±0.20 | | CHECKED | | DATE | | NAME | |
| | | | | X.XXX | | Jay | | 2023-07-22 | | 2.00mm R/A SMT WAFER | |
| | | | | ANG. ±2' | | DRAWN | | DATE | | SIZE | |
| X0 | INITIAL REVISION | Jay | 2023-07-22 | UNIT | MM | Amy | | 2023-07-22 | | SCALE | |
| SER | REVISIONS | CHK | DATE | | | | | | | SHEET | |
| | | | | | | | | | | 3/3 | |
| | | | | | | | | | | REV | |
| | | | | | | | | | | X0 | |



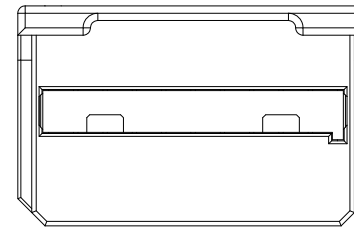
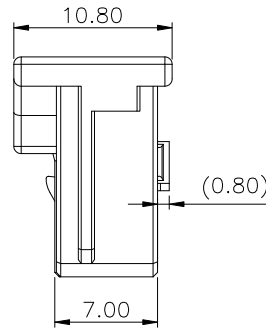
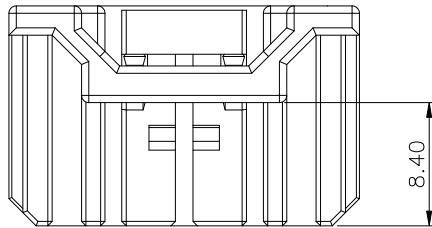
KEY-A



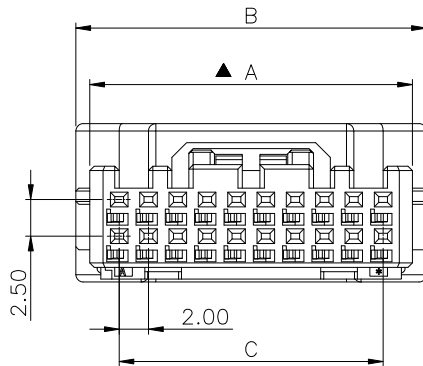
KEY-B



KEY-C



| PIN NO. | A | B | C | D |
|---------|----|------|----|------|
| 8 | 10 | / | 6 | 15.6 |
| 12 | 14 | 15.9 | 10 | 19.6 |
| 16 | 18 | 19.9 | 14 | 23.6 |
| 20 | 22 | 23.9 | 18 | 27.6 |
| 24 | 26 | 27.9 | 22 | 31.6 |
| 28 | 30 | 31.9 | 26 | 35.6 |
| 32 | 34 | 35.9 | 30 | 39.6 |
| 40 | 42 | 43.9 | 38 | 47.6 |

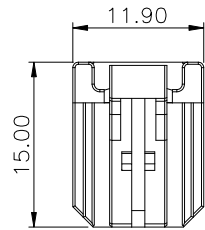


NOTES:
 MATERIAL:PBT
 VOLTAGE RATING: 60V AC/DC MAX.
 CURRENT RATING: 3A AC/DC(HIGHER CURRENT RATING ACHIEVABLE,CONTACT SALES FOR ADDITIONAL TECHNICAL INFORMATION)
 WITHSTANDING VOLTAGE: 500V AC/MINUTE
 TEMPERATURE RANGE: -40°C ~+125°C
 INSULATION RESISTANCE: ≥100MΩ
 CONTACT RESISTANCE: ≤10mΩ
 AFTER ENVIRONMENTAL TESTING: ≤30mΩ
 APPLICABLE BJD WAFER: 14111X-02XX08

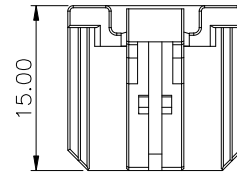
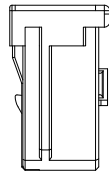
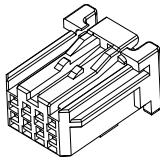
14111X-02XX08
 08: 8PIN
 12: 12PIN

- 1: KEY-A W/O CPA FEATURE
- 2: KEY-B W/O CPA FEATURE
- 3: KEY-C W/O CPA FEATURE
- 4: KEY-A WITH CPA FEATURE
- 5: KEY-B WITH CPA FEATURE
- 6: KEY-C WITH CPA FEATURE

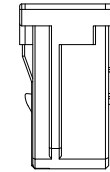
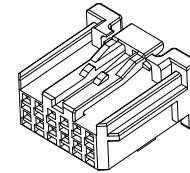
| | | | | | | | | | | | |
|-----|--------------------|-----|------------|--|----|-----------------|------|---|-------|---|-----|
| | | | | UNLESS OTHERWISE SPECIFIED TOLERANCES ARE | | 客户图 Drawings | | 北极大电子科技有限公司 BEIJIDA ELECTRONICS TECHNOLOGY CO. LIMITED | | | |
| | | | | X. X.X ±0.30 X.XX ±0.20 X.XXX ANG. ±2' | | APPROVED Jay | | DATE 2022-04-22 | | PART NO 14111X-02XX08 | |
| | | | | | | CHECKED Jay | | DATE 2022-04-22 | | NAME 2.00 mm SOCKET HOUSING ASSEMBLY | |
| X1 | UPDATE THE DRAWING | Jay | 2023-12-28 | UNIT | MM | DRAWN | DATE | SIZE | SCALE | SHEET | REV |
| SER | REVISIONS | CHK | DATE | MM | | | Bob | 2022-04-22 | A4 | 2:1 | 1/3 |



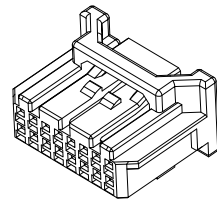
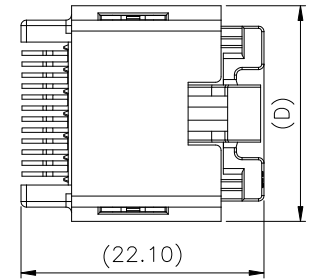
8PIN



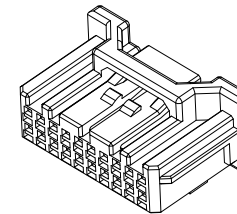
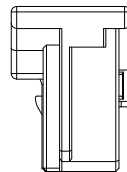
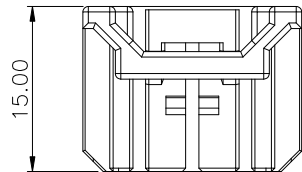
12PIN



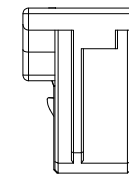
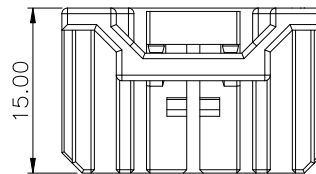
MATED DIMENSION



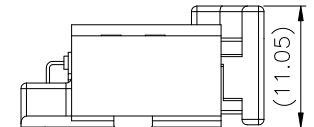
16PIN



20~40PIN



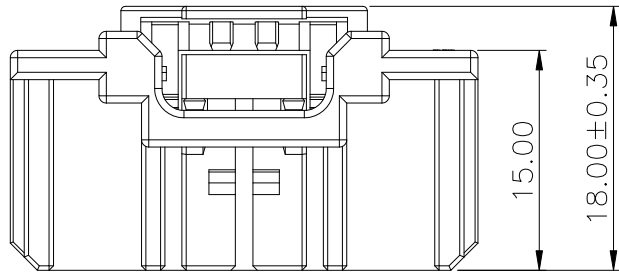
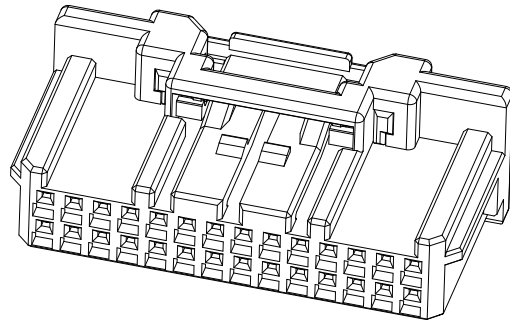
8-12 PIN



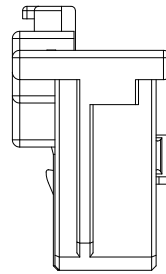
16-40 PIN

| | | | | | | | | | | | |
|-----|-----------|-----|------|---|-----------------|----------|---|---------------------------------|-------|-------|-----|
| | | | | UNLESS OTHERWISE SPECIFIED TOLERANCES ARE | 客户图 Drawings | | 北极大电子科技有限公司 BEIJIDA ELECTRONICS TECHNOLOGY CO. LIMITED | | | | |
| | | | | X. | | APPROVED | DATE | PART NO | | | |
| | | | | X.X | ±0.30 | Jay | 2022-04-22 | 14111X-02XX08 | | | |
| | | | | X.XX | ±0.20 | CHECKED | DATE | NAME | | | |
| | | | | X.XXX | | Jay | 2022-04-22 | 2.00 mm SOCKET HOUSING ASSEMBLY | | | |
| | | | | ANG. | ±2' | DRAWN | DATE | SIZE | SCALE | SHEET | REV |
| SER | REVISIONS | CHK | DATE | UNIT | MM | Bob | 2022-04-22 | A4 | 1.5:1 | 2/3 | X0 |

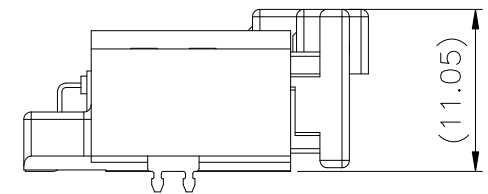
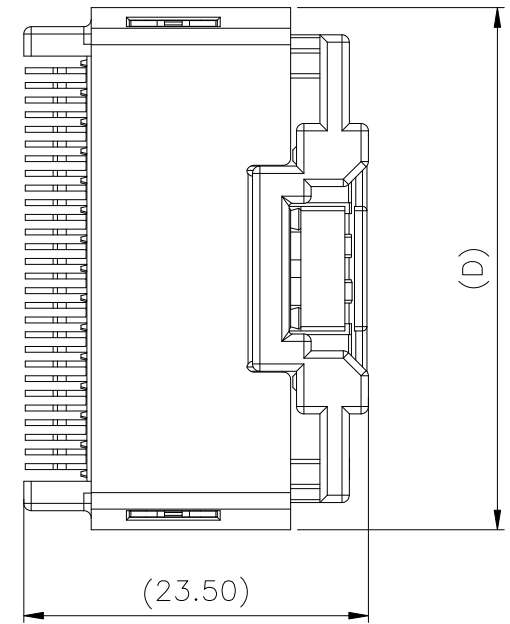
WITH CPA FEATURE



16-40PIN

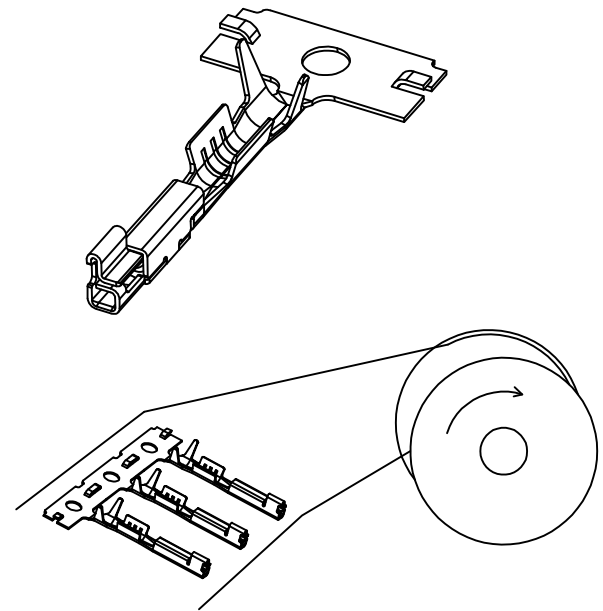
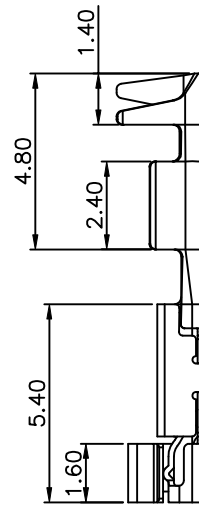
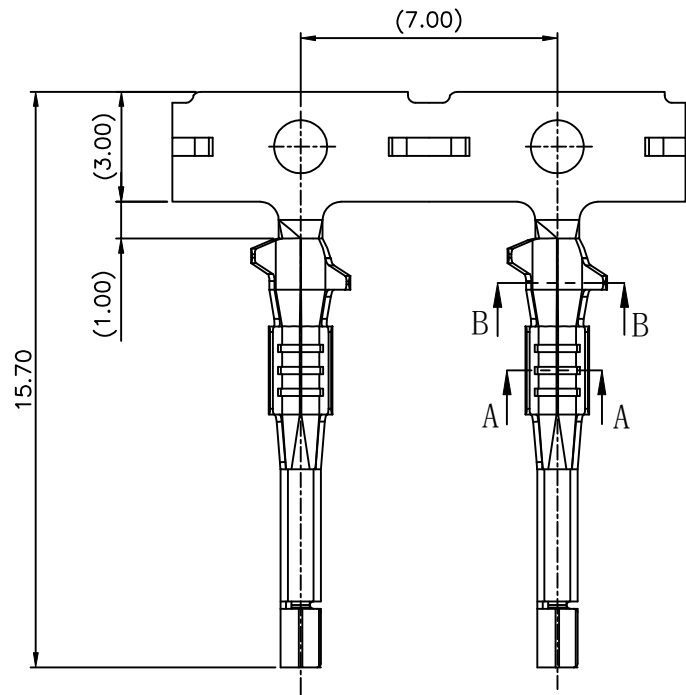


MATED DIMENSION

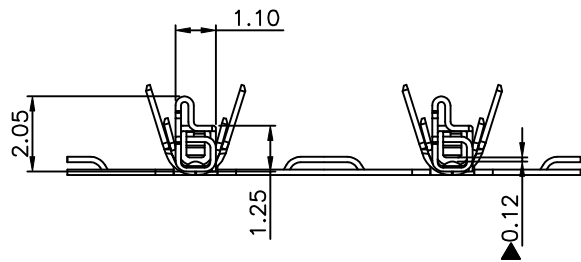


16-40 PIN

| | | | | | | | | | | | |
|--|--|--|--|---|--|-----------------|--|---|--|---------------------------------|--|
| | | | | UNLESS OTHERWISE SPECIFIED TOLERANCES ARE | | 客户图 Drawings | | 北极大电子科技有限公司 BEIJIDA ELECTRONICS TECHNOLOGY CO. LIMITED | | | |
| | | | | X. | | APPROVED | | DATE | | PART NO | |
| | | | | X.X ±0.30 | | Jay | | 2023-07-22 | | 14111X-02XX08 | |
| | | | | X.XX ±0.20 | | CHECKED | | DATE | | NAME | |
| | | | | X.XXX | | Jay | | 2023-07-22 | | 2.00 mm SOCKET HOUSING ASSEMBLY | |
| | | | | ANG. ±2' | | DRAWN | | DATE | | SIZE | |
| | | | | UNIT | | Amy | | 2023-07-22 | | A4 | |
| | | | | MM | | DATE | | SCALE | | SHEET | |
| | | | | SER | | REVISIONS | | 2:1 | | 3/3 | |
| | | | | CHK | | DATE | | REV | | X0 | |
| | | | | 4 | | 5 | | 6 | | 7 | |

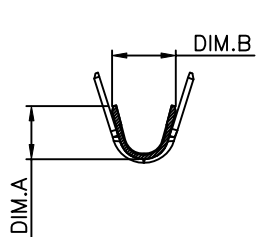


WINDING DIRECTION AFTER STAMPING

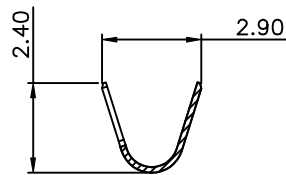


NOTES:

- VOLTAGE RATING: 60V AC/DC MAX.
- CURRENT RATING: 3A AC/DC(HIGHER CURRENT RATING ACHIEVABLE,CONTACT SALES FOR ADDITIONAL TECHNICAL INFORMATION)
- WITHSTANDING VOLTAGE: 500V AC/MINUTE
- TEMPERATURE RANGE: -40°C ~+125°C
- INSULATION RESISTANCE: ≥100MΩ
- CONTACT RESISTANCE: ≤10mΩ
- AFTER ENVIRONMENTAL TESTING: ≤30mΩ
- APPLICABLE BJD HOUSING: 14111X-02XX08
- MATERIAL: COPPER ALLOY,THK0.15mm
- TIN 40~120U"(1~3UM) OVERALL



SECTION A-A



SECTION B-B

| | | | |
|---------------|--|-------|-------|
| 241111-080252 | 0.50mm ² (20AWG) OD=1.60MAX | 1.80 | 1.92 |
| 241111-080242 | 0.22~0.35mm ² (22~24AWG) OD=1.50MAX | 1.46 | 1.74 |
| P/N | WIRE SIZE | DIM.A | DIM.B |

| | | | | | | | | | | | |
|-----|------------------|-----|------------|---|-----------------|--|---------------------------------|-------|-------|-----|--|
| | | | | UNLESS OTHERWISE SPECIFIED TOLERANCES ARE | 客户图 Drawings | 北极大电子科技有限公司 BEIJIDA ELECTRONICS TECHNOLOGY CO. LIMITED | | | | | |
| | | | | X. ±0.30 | APPROVED | DATE | PART NO | | | | |
| | | | | X.X ±0.20 | Jay | 2022-04-22 | 241111-0802X2 | | | | |
| | | | | X.XXX | CHECKED | DATE | NAME | | | | |
| X1 | ADD P/N | Jay | 2023-08-24 | ANG. ±2' | Jay | 2022-04-22 | Pitch 2.00 WTB Housing Terminal | | | | |
| X0 | INITIAL REVISION | Jay | 2022-04-22 | UNIT | DRAWN | DATE | SIZE | SCALE | SHEET | REV | |
| SER | REVISIONS | CHK | DATE | MM | Bob | 2022-04-22 | A4 | 5:1 | 1/1 | X1 | |