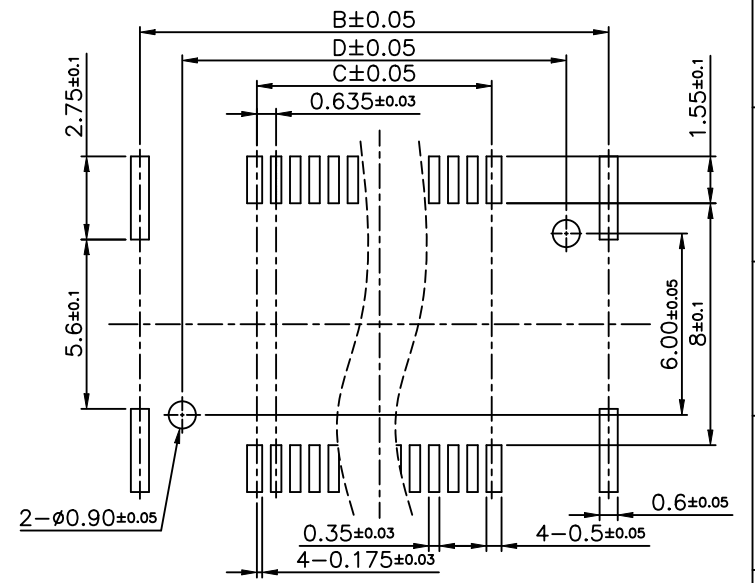
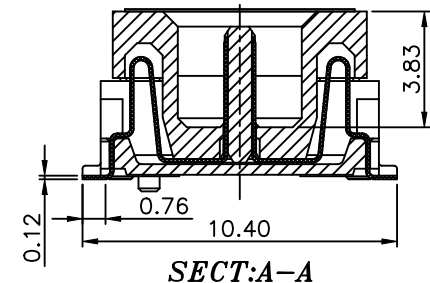
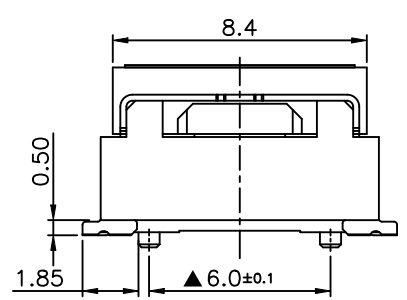


- NOTES:
- Housing A/B material: LCP (UL94V-0).
  - Terminal material: phosphor bronze.  
The overall 60u"~200u" Nickel Plated(lead-free).  
Welding pin gold plated 2u"~8u" MIN.  
contact point gold plated 4u" MIN. (Pb free).
  - Fitting nail material: Brass.  
The overall 80~120u" Nickel Plated (lead-free).  
Plated with matte Tin(100%) 80u" MIN. (lead-free).
  - "▲" Important dimensions.
  - PART NO. Specifications: 123023-20XX50-HF

Number of positions

Number	A	B	C	D
20	14.650	13.450	5.715	10.650
30	17.825	16.625	8.890	13.825
40	21.000	19.800	12.065	17.000
50	24.175	22.975	15.240	20.175
60	27.350	26.150	18.415	23.350
70	30.525	29.325	21.590	26.525
80	33.700	32.500	24.765	29.700
90	36.875	35.675	27.940	32.875
100	40.050	38.850	31.115	36.050



PCB LAYOUT

				UNLESS OTHERWISE SPECIFIED TOLERANCES ARE		客户图 Drawings		北极大电子科技有限公司 BEIJIDA ELECTRONICS TECHNOLOGY CO. LIMITED			
				X.		APPROVED		DATE		COMPUTER NO	
				X.X	$\pm 0.20$	Tianshu Chen		2020-05-05		123023-20XX50-HF	
				X.XX	$\pm 0.10$	CHECKED		DATE		NAME	
				X.XXX		Tianshu Chen		2020-05-05		BTB0.635-5代浮动式公座 (定位柱)	
				ANG.	$\pm 0'30''$	DRAWN		DATE		SIZE	
Release of drawing				Lu	2020-05-05	Loren Lu		2020-05-05		SCALE	
SER REVISIONS				CHK	DATE	UNIT		SCALE		REV	
						MM		4:1		A	