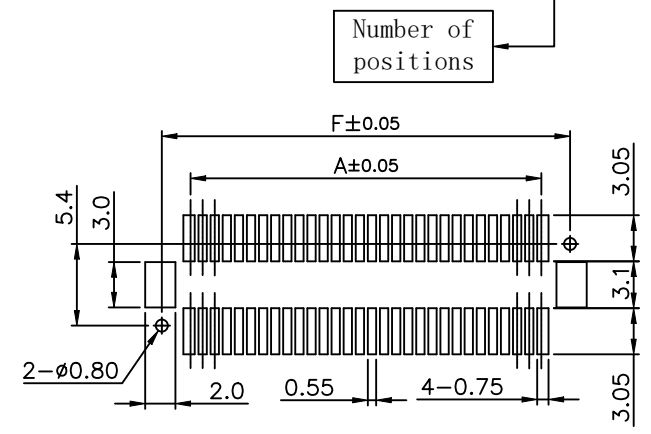
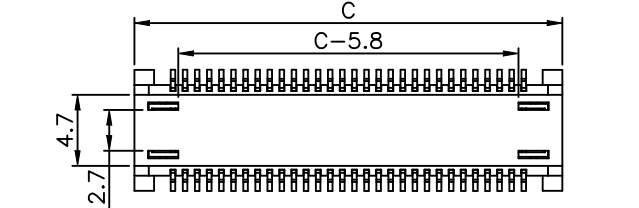
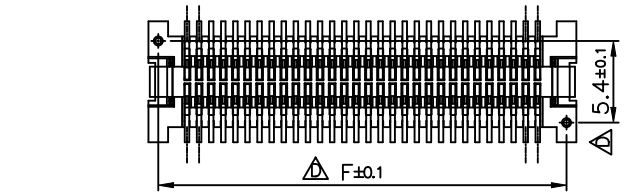
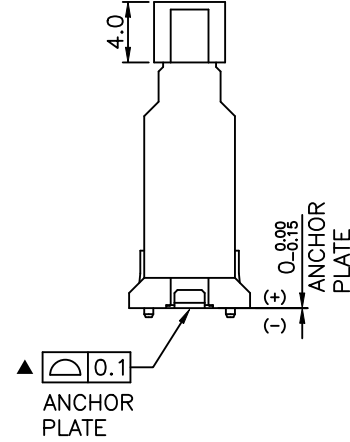
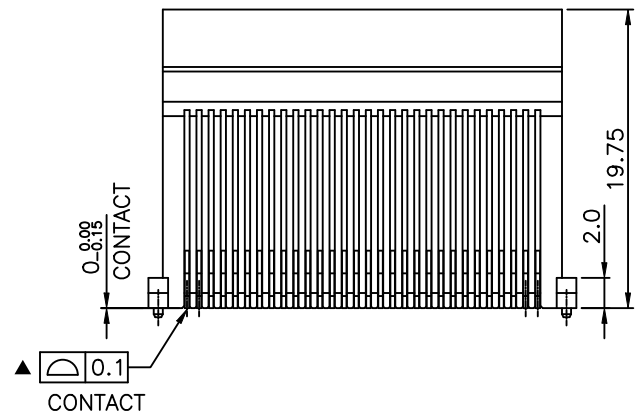
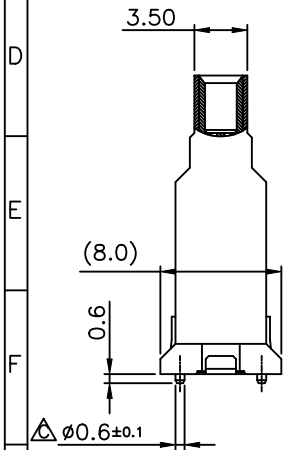


Notes:

- Housing material: PA-9T (UL94V-0).
- CAP material: PA-6T (UL94V-0).
- Terminal material: Copper alloy.  
The overall 60u"~200u" Nickel Plated(lead-free).  
Welding pin gold plated 2u"~8u" MIN.  
contact point gold plated 4u" MIN. (Pb free).
- Fitting nail material: Copper alloy.  
The overall 50u"~100u" Nickel Plated(lead-free).  
Plated with matte Tin(100%) 80u"~150u"(lead-free).
- "▲" Important dimensions.
- PART NO. Specifications: 123011-20XX50



RECOMMENDED PCB LAYOUT

GENERAL TOLERANCE  $\pm 0.05$

WITH CAP

				UNLESS OTHERWISE SPECIFIED TOLERANCES ARE	客户图 Drawings	北极大电子科技有限公司 BEIJIDA ELECTRONICS TECHNOLOGY CO. LIMITED				
				X.	APPROVED	DATE	COMPUTER NO			
				X.X ±0.20	陈天舒	2018-05-18	123011-20XX50			
				X.XX ±0.10	CHECKED	DATE	NAME			
				X.XXX	陈天舒	2018-05-18	BTB0.8-7 SERIES Floating PLUG ASSY			
				ANG. ±0'30'	DRAWN	DATE	SIZE	SCALE	REV	
				Release of drawing	Loren Lu	2018-05-18	A4	2:1	D	
SER	REVISIONS	CHK	DATE	UNIT						
				MM						