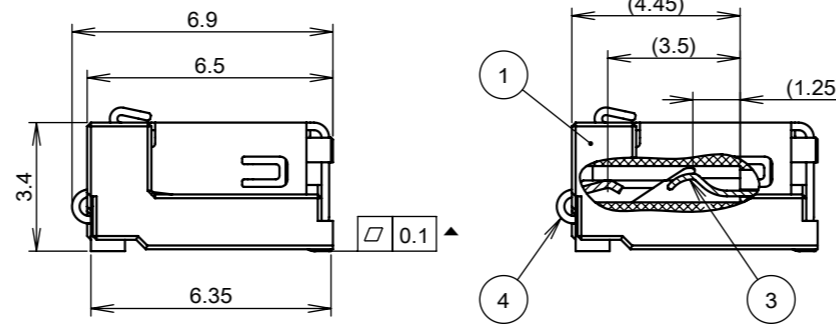
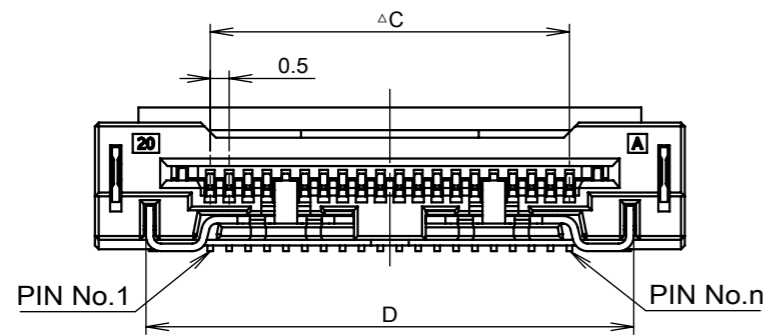
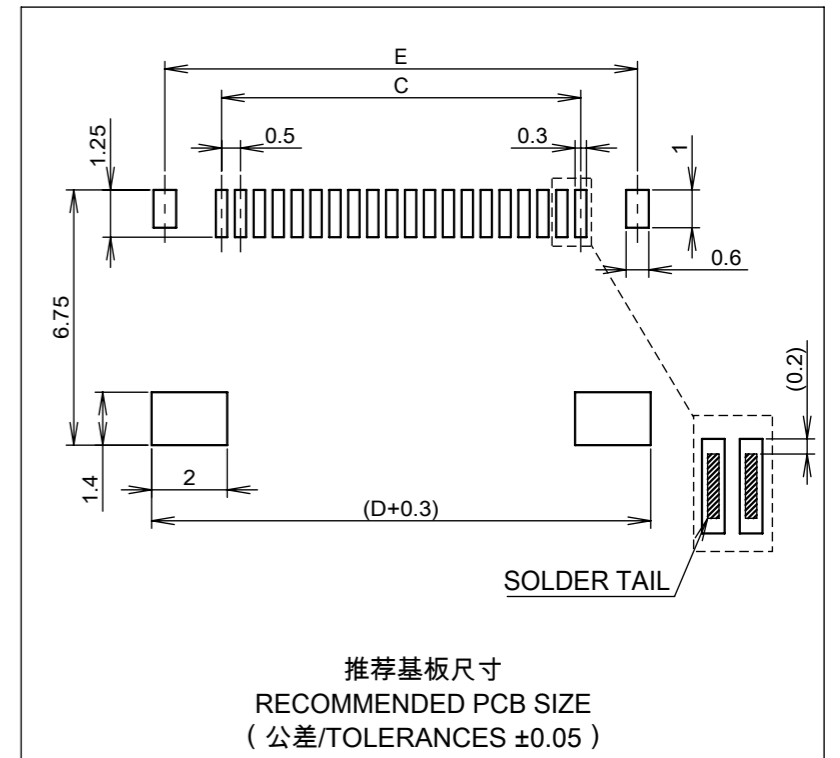
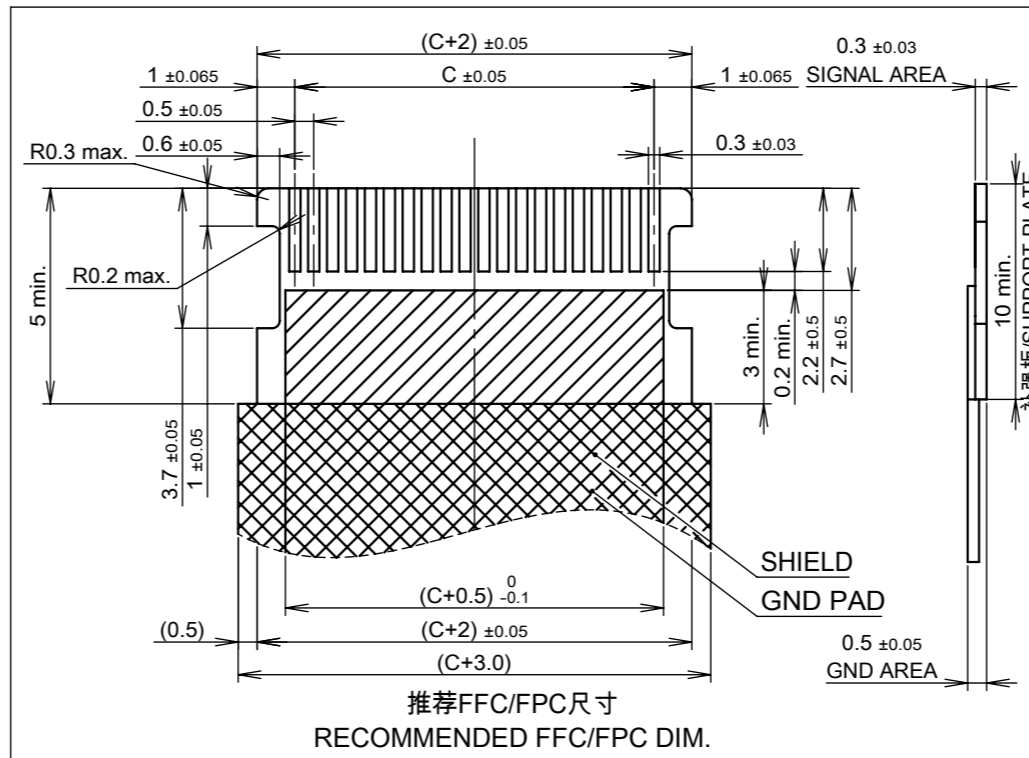
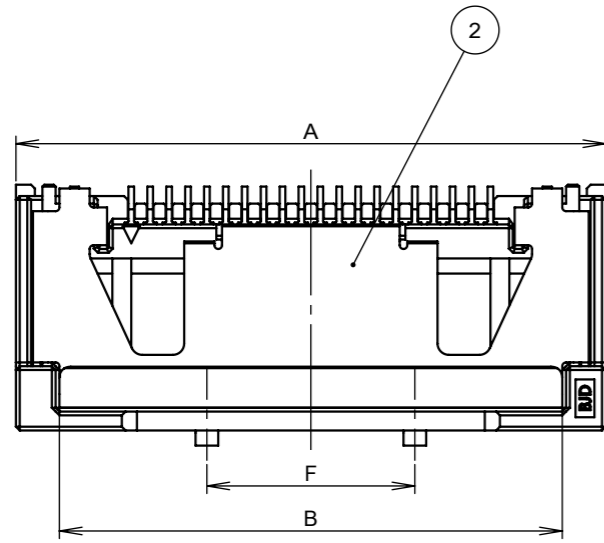
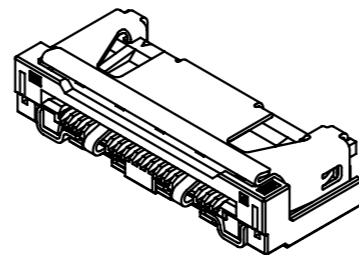
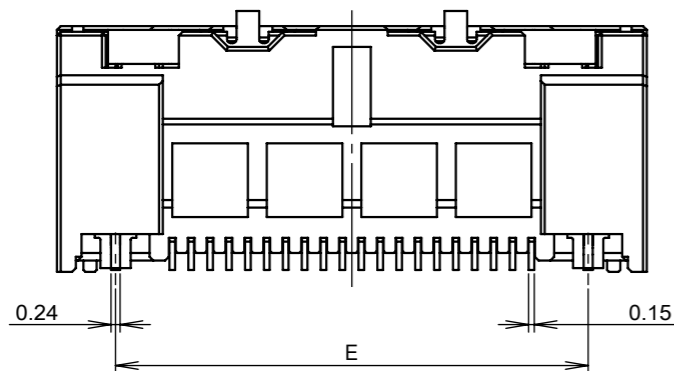


A B C D E F G H



NOTE:  
 1. 平面度/COPLANARITY: 0.1 MAX.  
 2. ▲ : 关键尺寸/CRITICAL DIMENSION  
 3. △ : 重要管理尺寸/IMPORTANT MANEGEMENT DIMENSION



CKT	P/N	A	B	C	D	E	F	GND
20	101106-202050-HF	15.6	13.3	9.5	12.9	12.5	5.5	有 WITH
25	101106-202550-HF	18.1	15.8	12.0	15.4	15.0	8.0	
30	101106-203050-HF	20.6	18.3	14.5	17.9	17.5	10.5	
32	101106-203250-HF	21.6	19.3	15.5	18.9	18.5	11.5	
35	101106-203550-HF	23.1	20.8	17.0	20.4	20.0	13.0	
40	101106-204050-HF	25.6	23.3	19.5	22.9	22.5	15.5	
45	101106-204550-HF	28.1	25.8	22.0	25.4	25.0	18.0	
50	101106-205050-HF	30.6	28.3	24.5	27.9	27.5	20.5	
55	101106-205550-HF	33.1	30.8	27.0	30.4	30.0	23.0	
60	101106-206050-HF	35.6	33.3	29.5	32.9	32.5	25.5	

No.	Part name	Quantity	Material	Plating
4	GND contact	2	Copper alloy	Under: Ni 60μ" Min. Surface: Matte Tin 80μ" Min.
3	Signal contact	Pin number	Copper alloy	Under: Ni 60μ" Min. Contact: Au 4μ" Min. Tail: Au 2μ" Min.
2	Lock	1	Copper alloy	Under: Ni 60μ" Min. Surface: Matte Tin 80μ" Min.
1	Insulator	1	LCP, UL94 V-0	N/A

GENERAL TOLERANCE/ 一般公差				客户图 CUSTOMER DRAWING		北极大电子科技有限公司 BEIJIDA ELECTRONICS TECHNOLOGY CO., LTD.					
X < 10	±0.2	PAGE	1 OF 1	PART NUMBER		101106-20XX50-HF					
20 ≤ X < 30	±0.25	APPROVED	TS.Chen	DATE	2023/06/10	PART NAME		FPC0.5-27 Auto-lock Connector (20-60P)			
30 ≤ X	±0.3	CHECKED	QF.Dong	DATE	2023/06/10	DRAWING NUMBER		SBA-F0527-001			
ANGLE/角度	±0.3°	DRAWN	ZF.Luo	DATE	2023/06/10	SIZE	A3	SCALE	5:1	REV	X0
SER	REVISIONS	CHK	DATE	UNIT	mm						