

产品规格书

PRODUCT SPECIFICATION
(FPC0409A Series)

【1】 参考文献 References:

EIA-364
ELECTRONICS INDUSTRIES ASSOCIATION

【2】 产品适用范围 Scope of product application

本规范使用于 FPC0409A 系列 FPC 连接器，包含了产品的性能、试验方法和要求。
This specification applies to FPC0409A series FPC connector, contains the product performance, test methods and requirements.

Product Name	Customer P/N	BJD/PN
FPC0409A Series	/	906001-10XX50

【3】 形状，尺寸，及材料 Configuration, Dimension, and Material

参考图面 Refer to Drawings

【4】 额定值 Ratings

项目 Item	规格 Standard	
最大容许电压 Maximum allowable voltage	40V	[AC(有效 值 rms)/DC]
最大容许电流 Maximum allowable current	0.4A	
使用温度范围 Temperature range	-40°C ~ +85°C	

* 包含电流通过所产生的上升温度 Including terminal temperature rise

【4】保管条件 Storage condition (reference item)

项目 Item	规格内容 Standard
储存温度 Storage temperature	-10°C ~ +50°C
储存湿度 Storage humidity	65% Max
储存期限 Storage life	1 年(焊接贴板最佳时段为 6 个月内) one year

【5】性能 Performance

5.1. 电气性能

Electrical Performance

NO.	试验项目 Items	试验条件 Test Condition	规格 Requirement
5.1.1	接触电阻 Contact Resistance	适合 FPC/FFC 嵌合；开放电压 20mV 以下； 短路电流 10mA 的状态下测定。 Mate applicable FPC/FFC and measured by dry circuit, 20mV MAX., 10mA	50 mΩ Max
5.1.2	绝缘电阻 Insulation Resistance	适合 FPC/FFC 嵌合；相邻端子间或端子与地 面间加 DC 100V 下测定。 Mate applicable FPC/FFC and apply 100V DC between adjacent terminal or ground.	500 MΩ Min
5.1.3	耐电压 Voltage resistance	适合 FPC/FFC 嵌合；相邻端子间或端子与地 面间加 AC 150V (有效值) 历时 1 分钟下测定。 Mate applicable FPC/FFC and apply 500V AC (rms) for 1 minute between adjacent terminal or ground.	无击穿现象 No breakdown

5.2.机械性能

Mechanical Performance

NO.	试验项目 Items	试验条件 Test Condition	规格 Requirement
5.2.1	FPC 保持力 (不带卡扣) FPC Retention Force (Non-assist)	适合 0.2mm 厚的 FFC；后盖锁好,用每分钟 25±3mm 的速度； 平行地拔出。 Mate applicable thick 0.2mm FFC/FPC, Insert the actuator, pull the FPC at the speed rate of 25±3mm/minute	0.15*n (N) Min
5.2.2	端子保持力 Terminal/Housing Retention Force	单一端子,以用每分钟 25±3mm 的速度平行向外拉 Apply axial pull out force at the speed rate of 25±3mm/minute on the terminal assembled in the housing	0.5 N Min
5.2.3	重复插拔 Repeated pluggable	无通电状态,以 10 次/分钟的速度插拔 20 次 The power is off, Insert and withdraw actuator up to 20 cycles at the speed rate of less than 10 cycles/minute.	100 mΩ Max

5.3.环境性能

Environment Performance

NO.	试验项目 Items	试验条件 Test Condition	规格 Requirement	
5.3.1	耐振动性 Vibration	DC 1mA 通电状态下;嵌合轴沿 XYZ 三个方向振动; 振幅 1.5mm ; 频率 10-55-10Hz/分; 历时 2 小时 The power is on with Current: DC 1mA Amplitude: 1.5mm P-P Sweep time:10-55-10Hz in 1 minute Duration:2 hours in each X.Y.Z. axes	外观 Appearance	无损坏 No damage
			接触抵抗 Contact resistance	100mΩ Max
			瞬断 Transient breaking	1 μs .Max.
5.3.2	耐冲击性 Shock	在 DC 1 ma 通电的状态下, 嵌合沿相互垂直的 6 个 方向; 每 3 次加速度 490 米/s ² {50g}。 Mate applicable FPC and subject to the following shock conditions. 3 times of shocks shall beapplied for each 6 directions along 3 mutuallyperpendicular axes, passing DC 1mA currentduring the test.(Total of 18 shocks)Test pulse : Half SinePeak value : 490m/s ² {50G}Duration : 6 milliseconds.	外观 Appearance	无损坏 No damage
			接触抵抗 Contact resistance	100mΩ Max
			瞬断 Transient breaking	1 μs .Max.

NO.	试验项目 Items	试验条件 Test Condition	规格 Requirement	
5.3.3	耐热性 Heat resistance	适合 FPC/FFC 嵌合; 85±2℃的空气中; 放置 96 小时; 再回到室温中放置 1-2 小时 Mate applicable FPC/FFC. in the air 85 ± 2 °C for 96 hours; to return to room temperature for 1-2 hours in the place	外观 Appearance	无损坏 No damage
			接触抵抗 Contact resistance	100 mΩ Max
5.3.4	耐寒性 cold resistance	适合 FPC/FFC 嵌合; -40±3℃的空气中; 放置 96 小时; 再回到室温中放置 1-2 小时 Mate applicable FPC/FFC, in the air -40 ± 2 °C for 96 hours;to return to room temperature for 1-2 hours in the place	外观 Appearance	无损坏 No damage
			接触抵抗 Contact resistance	100 mΩ Max
5.3.5	耐湿性 Humidity	适合 FPC/FFC 嵌合; 40±2℃、相对湿度 90-95%的空气中; 放置 96 小时; 再回到室温中 1-2 小时内测定 in the air of Temperature 40 ± 2 °C and 90-95% relative humidity for 96 hours; to return to room temperature for 1-2 hours in the place	外观 Appearance	无损坏 No damage
			耐电压 Dielectric Strength	满足 5.1.3
			绝缘抵抗 Insulation resistance	500 MΩ Min
			接触抵抗 Contact resistance	100 mΩ Max
5.3.6	温度循环 Temperature cycling	适合 FPC/FFC 嵌合; -40±3℃ 30 分钟; 常温常湿 10-15 分钟; 85±2℃ 30 分钟; 常温常湿 10-15 分钟, 循环 5 次。 5 cycles of: A)-40±3℃ 30 minutes B)Room temperature and humidity from 10 to 15 minutes C)85±2℃ 30 minutes D)Room temperature and humidity from 10 to 15 minute	外观 Appearance	无损坏 No damage
			接触抵抗 Contact resistance	100 mΩ Max

5.3.7	耐盐雾性 Salt Spray	<p>适合 FPC/FFC 嵌合; 35±2℃、5±1%的盐水喷雾(Sn 24H Au 48H); 试验后常温水洗; 再室温干燥, 常温常湿放置 1-2 小时。</p> <p>Mate applicable FPC/FFC. (Sn 24 Au 48H)exposure to a salt spray from 5±1% solution at 35±2℃ . Use water at room temperature to wash ;To dry at room temperature Keep wet for 1-2 hours.</p>	外观 Appearance	无损坏 No damage
			接触抵抗 Contact resistance	100 mΩ Max
5.3.8	耐亚硫酸 SO2 Gas	<p>适合 FPC/FFC 嵌合; 40±2℃、25±5ppm 的亚硫酸中放置 24 小时</p> <p>Mate applicable FPC/FFC. 24H exposure to 25±5ppm SO2 Gas at 40±2℃</p>	接触抵抗 Contact resistance	100 mΩ Max
5.3.9	耐氨性 NH3 Gas	<p>适合 FPC/FFC 嵌合; 浓度为 28%的氨水容器中; 温度: 40℃±2,相对湿度 75%RH, 浓度 3±1ppm 放置 24 小时试验后测试接触电阻。</p> <p>The connector and FPC/FFC. mated is exposed in the H₂S gas chamber 40±2℃, 75%RH 3±1ppm for 24 hours.It shall be measured the contact resistance after the test.</p>	外观 Appearance	无损坏 No damage
			接触抵抗 Contact resistance	100 mΩ Max
5.3.10	可焊性 Solderability	<p>端子前端基准面 0.2mm 处浸入 250±5℃的锡槽中; 历时 2±0.5 sec。</p> <p>Soldering time: 2±0.5 sec</p> <p>Soldering temperature: 250±5℃</p>	沾敷性 Solder Wetting	沾锡面积 95%以上 Soldering area more than 95%
5.3.11	耐焊热 Resistance to soldering Heat	<p>高温烤箱 260±5℃,60 秒。</p> <p>Soldering temperature 260±5℃,60sec.</p>	外观 Appearance	无损坏 No damage

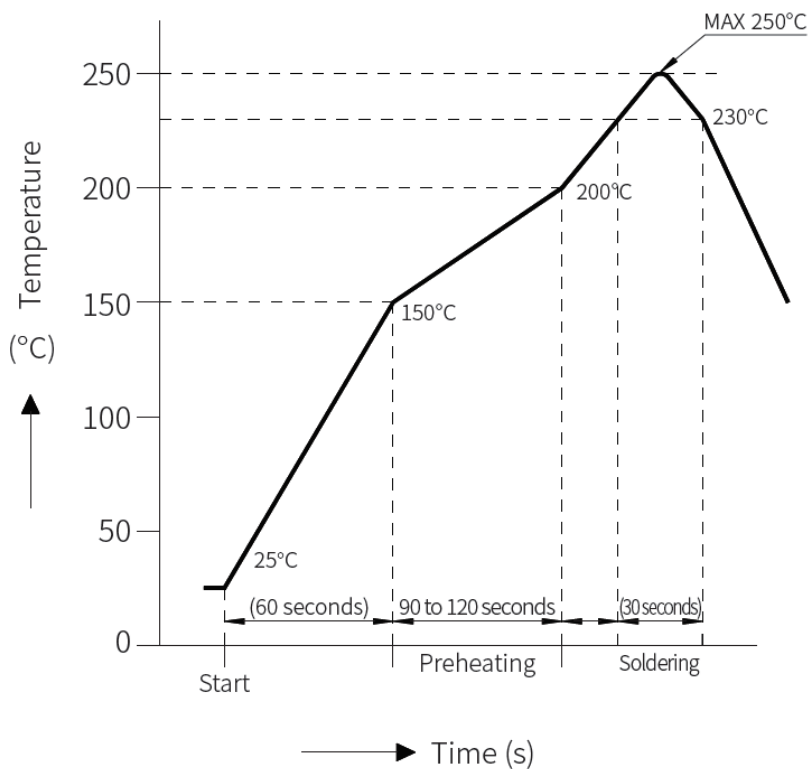
【6】焊接条件(参考项)

soldering condition (reference item)

(1) 回流焊接条件: Reflow soldering conditions		(2) 手工焊接条件 Manual soldering conditions	
预热 Preheat	150~200°C	温度 temperature	350±10°C
预热时间 Preheat time	90~120sec	焊接时 soldering time	3sec Max (一个 Pin 脚) 3sec max on each pin
最高温度 the highest temperature	Max 250°C		
焊接时间 soldering time	5sec Max		
条件 Condition	参照温度曲线图 Look at reflow condition picture		

◎ 焊接曲线图

Reflow condition picture



深圳市北极大电子科技有限公司
Shenzhen Beijida Electronics Technology Co., Ltd

测试报告
Test Report

送检单位: 工程部
Applicant: engineering department

产品名称: Series Pitch0.4 H0.9后掀盖式FPC/FFC连接器
Patr Name: Series Pitch0.4H0.9 rear hatchback FPC/FFC connector

产品料号: 906001-100950
Part No.:

样品接收日期: 2024/3/16
Date of Sample

样品测试日期: 2024/03/16-2024/03/30
Date of Testing:

报告编号: BJD/LAB20240330001
Report No.:

核准: Leo
Approval: Chen

审核: Kevin
Audit: Zhang

测试: 赵花英
Test: Zhao huaying

检测中心地址: 广东省东莞市塘厦镇科苑城鹿乙二路9号
Lab.Add:No. 9, Luyi Second Road, Tangxia Town, Dongguan City, Guangdong
Province

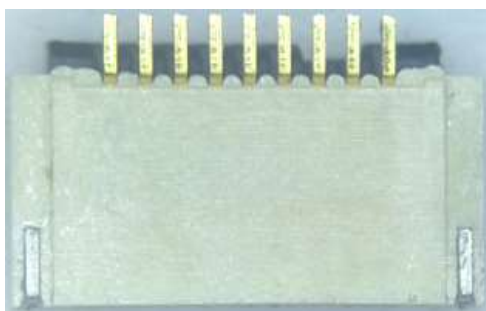
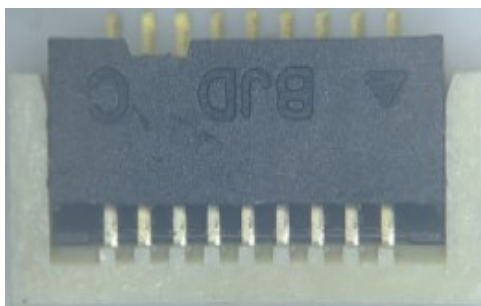
电话: 0769-82093170
Tel:0769-82093170

1、样品描述:**Sample description:**

样品数量: 75PCS
Number of samples:

生产批号: /
Batch No.:

样品状态: 无异常
Sample Condition: Normal

2、试验样品示意图:**Test sample diagram:****3、结果判定:****Result determination:**

合格
PASS

4、环境条件:

Environmental conditions:

除非另有说明, 否则在试验期间, 以下环境条件为准: 温度:15°C~ 35°C;相对湿度:25% ~ 75%

Unless otherwise stated,the following environmental conditions prevailed during testing:

Temperature:15°C to 35°C;Relative humidity:25% to 75%

5、试验设备清单:

Test Equipment List:

设备名称 Test Equipment	设备型号 Model No.	设备编号 Equipment No.	校准有效期截止日期 Calibration Due Date
耐压绝缘测试仪 Withstand Voltage and Insulation Tester	LANKE7122	T-LAB-GK-001	2025.4.10
恒温恒湿试验箱 constant temperature and humidity test chamber	JQTH-100	T-LAB-GK-006	2024.07.25
全自动插拔力测试机 Automatic insertion and withdrawal force testing machine	1220S	T-LAB-GK-010	2024.07.25
电阻计 ohmmeter	RM3545	T-LAB-GK-015	2025.4.10
烤箱 oven	TH8011B	T-LAB-GK-016	2024.07.25
可编程直流电子负载 Programmable DC electronic load	DCL8003+	T-LAB-GK-017	2025.4.10
可编程开关直流电源 Programmable switch DC power supply	PD9630	T-LAB-GK-018	2025.4.10
多路温度记录仪 Multi-channel temperature recorder	TR-230X	T-LAB-GK-019	2025.4.10
万用表 Multimeter	JQTS2-100L-S	T-LAB-GK-025	2025.4.10
显微镜 Microscope	HTC-1	T-LAB-GK-035	免校
全自动插拔力测试机 Insertion and Extraction Force Tester	XTC-165-MB	T-LAB-GK-037	2025.4.10
瞬断仪 Instantaneous breaking apparatus	NMS10	T-LAB-GK-042	2024.07.25
分贝仪 dB Meter	PM6708	T-LAB-GK-043	2024.07.25
三综合振动试验机 Three comprehensive vibration testing machine	ES-10-240	T-LAB-GK-053	2024.07.25
锡炉 Tin furnace	CM100S	T-LAB-GK-054	2024.05.03
冷热冲击试验箱 thermal shock test chambe	JQTS2-100L-S	T-LAB-GK-021	2024.07.25

除非另有说明, 本报告的结果仅对测试样品负责。未经本公司许可, 不得部分复制本报告, 但整份除外。

The results in this test report refer only to the samples tested unless otherwise stated. This test report cannot be reproduced, except in full, without prior written permission of the Company.

6、试验项目汇总:
Summary of test items:

序号 No.	试验项目 Test items	确认项目 Confirm the project	试验标准 Test standard	试验结论 Test conclusion
1	接触电阻 Contact Resistance	1.1接触电阻 contact resistance	EIA-364ELECTRONICS INDUSTRIES ASSOCIATION	PASS
2	绝缘耐压 Insulation withstand voltage	2.1绝缘耐压 Insulation withstand voltage	EIA-364ELECTRONICS INDUSTRIES ASSOCIATION	PASS
3	FPC 保持力 FPC Retention Force	3.1FPC 保持力(不带卡扣)FPC holding force(without clasp) 3.1端子保持力Terminal holding force	EIA-364ELECTRONICS INDUSTRIES ASSOCIATION	PASS
4	重复插拔 Repeated pluggable	4.1重复插拔 Repeated pluggable	EIA-364ELECTRONICS INDUSTRIES ASSOCIATION	PASS
5	耐振动性 Vibration	5.1外观 Appearance 5.1接触电阻 contact resistance 5.1瞬时切断监控Cut off monitoring instantly	EIA-364ELECTRONICS INDUSTRIES ASSOCIATION	PASS
6	冲击试验 shock test	6.2外观 Appearance 6.2接触电阻 contact resistance 6.2瞬时切断监控Cut off monitoring instantly	EIA-364ELECTRONICS INDUSTRIES ASSOCIATION	PASS
7	耐热性 Heat resistance	7.1外观 Appearance 7.1接触电阻 contact resistance	EIA-364ELECTRONICS INDUSTRIES ASSOCIATION	PASS
8	耐寒性 Cold resistance	8.1外观 Appearance 8.1接触电阻 contact resistance	EIA-364ELECTRONICS INDUSTRIES ASSOCIATION	PASS
9	耐湿性 Humidity	9.1外观 Appearance 9.1绝缘耐压 Insulation withstand 9.1接触电阻 contact resistance	EIA-364ELECTRONICS INDUSTRIES ASSOCIATION	PASS
10	温度循环 Temperature cycling	10.1外观 Appearance 10.1接触电阻 contact resistance	EIA-364ELECTRONICS INDUSTRIES ASSOCIATION	PASS
11	耐盐雾性 Salt Spray	11.1外观 Appearance 11.1接触电阻 contact resistance	EIA-364ELECTRONICS INDUSTRIES ASSOCIATION	PASS
12	可焊性 Solderability	14.1沾敷性 Solder Wetting	EIA-364ELECTRONICS INDUSTRIES ASSOCIATION	PASS
13	耐焊热 Resistance to soldering Heat	15.1外观 Appearance	EIA-364ELECTRONICS INDUSTRIES ASSOCIATION	PASS

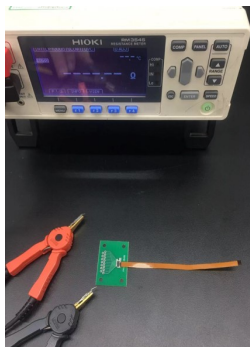
除非另有说明,本报告的结果仅对测试样品负责。未经本公司许可,不得部分复制本报告,但整份除外。

The results in this test report refer only to the samples tested unless otherwise stated. This test report cannot be reproduced, except in full, without prior written permission of the Company.

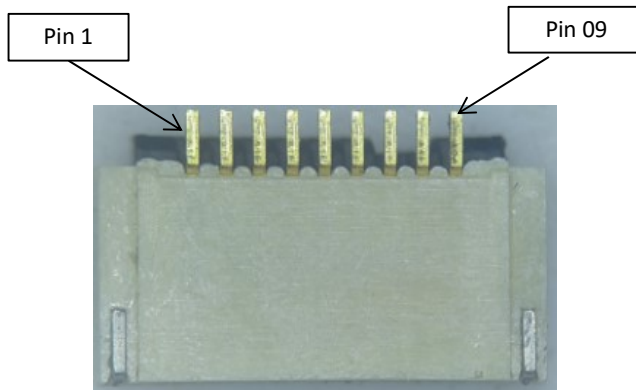
6、测试描述 Test Summary:

6.1.1: 接触电阻 Contact resistance

试验标准: Series Pitch0.4H0.9 rear hatchback FPC/FFC connector
 Test Standard
 试验条件: 适合 FPC/FFC 嵌合; 开放电压 20mV 以下; 短路电流 10mA 的状态下测定。
 Test Methods: Suitable for FPC/FFC chimeric; Open voltage below 20mV; Short-circuit current is measured at 10mA. The connector or terminal shall be mate and unmate for ten times along the mating direction.
 试验设备: 电阻测试仪 型号 RM3545 Resistance tester Model RM3545
 Test Equipment



样品编号 Samples No.	测试要求 Test requirement	测试结果 (毫欧) Test Result (mΩ)								结果判定 Verdict
		Pin 1	Pin 2	Pin 3	Pin 4	Pin 5	Pin 6	Pin 8	Pin 9	
1#	50mΩ Max .	27	22	24	23	24	26	28	25	PASS
2#		29	28	31	26	28	29	30	32	PASS
3#		22	27	29	26	24	25	25	26	PASS
4#		26	24	23	25	22	23	27	25	PASS
5#		24	28	28	27	24	26	29	27	PASS



6.2.1: 绝缘耐压 Insulation withstand voltage

试验标准: Series Pitch0.4H0.9 rear hatchback FPC/FFC connector
 Test Standard

 试验条件: 适合FPC/FFC嵌合; 相邻端子间或端子与地面间加DC 100V下, AC 150V (有效值) 历时 1 分钟下测定。
 Test Methods: Suitable for FPC/FFC chimerism; Add DC 100V between adjacent terminals or between terminals and the ground, and AC 150V (effective value) for 1 minute.

 试验设备: 耐压绝缘测试仪 型号7112 Voltage insulation tester Model 7112
 Test Equipment



样品编号 Samples No.	测试要求 Test requirement	测试结果 Test Result		结果判定 Verdict
		耐电压 Withstand voltage	绝缘电阻(MΩ) Insulation resistance (M	
6#	绝缘电阻: 500MΩ Min . Insulation resistance 500MΩ Min. 耐电压: 无击穿现象. There is no breakdown.	无击穿现象 Non-breakdown phenomenon	>999MΩ	PASS
7#		无击穿现象 Non-breakdown phenomenon	>999MΩ	PASS
8#		无击穿现象 Non-breakdown phenomenon	>999MΩ	PASS
9#		无击穿现象 Non-breakdown phenomenon	>999MΩ	PASS
10#		无击穿现象 Non-breakdown phenomenon	>999MΩ	PASS

除非另有说明, 本报告的结果仅对测试样品负责。未经本公司许可, 不得部分复制本报告, 但整份除外。

The results in this test report refer only to the samples tested unless otherwise stated. This test report cannot be reproduced, except in full, without prior written permission of the Company.

6.3.1: FPC保持力 FPC retention force

试验标准: Series Pitch0.4H0.9 rear hatchback FPC/FFC connector
 Test Standard

试验条件: 适合 0.2mm 厚的 FFC/FPC; 后盖锁好,用每分钟 25±3mm 的速度; 平行地拔出。
 Test Methods: Mate applicable thick 0.2mm FFC/FPC, Insert the actuator, pull the FPC at the speed rate of 25±3mm/minute.
 单一端子,以用每分钟 25±3mm 的速度平行向外拉
 Single terminal, pulling outward in parallel at a speed of 25±3mm per minute.

试验设备: 全自动插拨力测试机 型号: 1220S Automatic thrust force testing machine model: 1220S
 Test Equipment



样品编号 Samples No.	测试要求 Test requirement	FPC 保持力不带卡扣测试结果 (N) FPC Holding force without clasp test results (N)	结果判定 Verdict
11#	0.15N Min ./ Pin	0.32	PASS
12#	0.15N Min ./ Pin	0.31	PASS
13#	0.15N Min ./ Pin	0.35	PASS
14#	0.15N Min ./ Pin	0.30	PASS
15#	0.15N Min ./ Pin	0.34	PASS

样品编号 Samples No.	测试要求 Test requirement	端子保持力测试结果 (N) Terminal holding force test results (N)	结果判定 Verdict
16#	0.5N Min .	1.05	PASS
17#	0.5N Min .	1.13	PASS
18#	0.5N Min .	0.95	PASS
19#	0.5N Min .	1.02	PASS
20#	0.5N Min .	0.98	PASS

除非另有说明, 本报告的结果仅对测试样品负责。未经本公司许可, 不得部分复制本报告, 但整份除外。

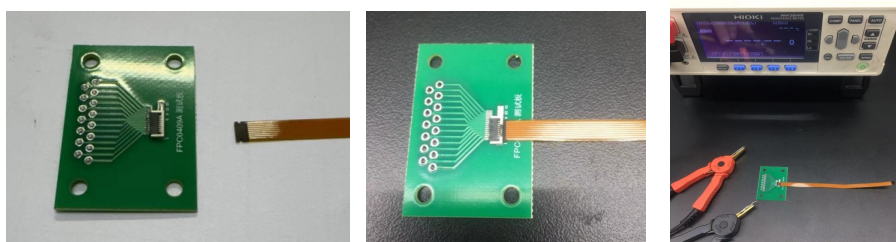
The results in this test report refer only to the samples tested unless otherwise stated. This test report cannot be reproduced, except in full, without prior written permission of the Company.

6.4.1: 重复插拔 Repeated pluggable

试验标准: Series Pitch0.4H0.9 rear hatchback FPC/FFC connector
 Test Standard

试验条件: 无通电状态,以 10 次/分钟的速度插拔 20 次
 Test Methods: The power is off, Insert and withdraw actuator up to 20 cycles at the speed rate of less than 10 cycles/minute.

试验设备: 电阻测试仪 型号RM3545 Resistance tester Model RM3545
 Test Equipment 人工 Manually



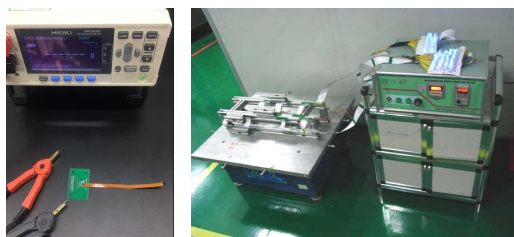
样品编号 Samples No.	测试要求 Test requirement	测试结果 Test Result	结果判定 Verdict
		接触电阻(mΩ) Contact resistance(mΩ)	
21#	接触电阻:100mΩ Max. Contact resistance :100mΩ Max..	34	PASS
22#		35	PASS
23#		38	PASS
24#		37	PASS
25#		36	PASS

除非另有说明,本报告的结果仅对测试样品负责。未经本公司许可,不得部分复制本报告,但整份除外。

The results in this test report refer only to the samples tested unless otherwise stated. This test report cannot be reproduced, except in full, without prior written permission of the Company.

6.5.1: 耐振动 Vibration Test:

试验标准: Series Pitch0.4H0.9 rear hatchback FPC/FFC connector
 Test Standard
 试验条件: DC 1mA 通电状态下; 嵌合轴沿 XYZ 三个方向振动; 振幅 1.5mm; 频率 10-55-10Hz/分; 历时 2 小时
 Test Methods: The power is on with Current: DC 1mA Amplitude: 1.5mm P-PSweep time:10-55-10Hz in 1 minute
 Duration:2 hours in each X Y Z axes
 试验设备: 电阻测试仪 型号RM3545 Resistance tester Model RM3545
 Test Equipment 振动试验机 型号MVS-200 Vibration testing machine model MTS-200



样品编号 Samples No.	测试要求 Test requirement	测试结果 Test Result			结果判定 Verdict
		外观 appearance	接触电阻(mΩ) Contact resistance(mΩ)	瞬断 Instant break	
26#	外观无异常, 接触电阻:100mΩ Max. 瞬断1 μs .Max No abnormality in appearance, Contact resistance :100mΩ Max. Instant break 1 μs.Max	无变形和损坏 No deformation and	38	<1 μs	PASS
27#		无变形和损坏 No deformation and	37	<1 μs	PASS
28#		无变形和损坏 No deformation and	40	<1 μs	PASS
29#		无变形和损坏 No deformation and	41	<1 μs	PASS
30#		无变形和损坏 No deformation and	39	<1 μs	PASS

除非另有说明, 本报告的结果仅对测试样品负责。未经本公司许可, 不得部分复制本报告, 但整份除外。

The results in this test report refer only to the samples tested unless otherwise stated. This test report cannot be reproduced, except in full, without prior written permission of the Company.

6.6.1: 冲击试验 shock test

试验标准:
Test Standard Series Pitch0.4H0.9 rear hatchback FPC/FFC connector

试验条件:
Test Methods: 将接插件固定在冲击测试台上, 在DC1ma通电的状态下, 嵌合沿相互垂直的6个方向; 每3次加速度 490 米/s² {50g} 试验。
The connector was fixed on the impact test bench, and the six perpendicular to each other were inserted along the DC 1 ma powered state Direction; Every 3 acceleration 490 m /s² {50g} test.

允收标准:
Accept Standard: 外观: 没有影响机能的裂纹、生锈、划伤、变形等外观问题; 瞬时切断监控: 瞬断 < 1μs, 电阻 100mΩ Max
Appearance: no cracks, rust, scratches, deformation and other appearance problems that affect the function; Instantaneous cut-off monitoring: instantaneous cut-off < 1μs, resistance 100mΩ Max

试验设备:
Test Equipment 液压垂直冲击试验台 T-LAB-GK-051、显微镜 T-LAB-GK-035、瞬断仪 T-LAB-GK-042



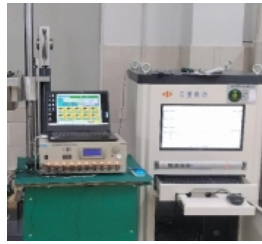
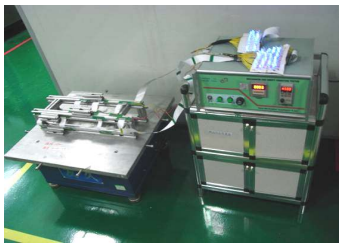
X轴



Y轴



Z轴



除非另有说明, 本报告的结果仅对测试样品负责。未经本公司许可, 不得部分复制本报告, 但整份除外。

The results in this test report refer only to the samples tested unless otherwise stated. This test report cannot be reproduced, except in full, without prior written permission of the Company.

6.6.2: 冲击试验 shock test

样品编号 Samples No.	测试要求 Test requirement	测试结果 Test Result	结果判定 Verdict
31#	没有影响机能的外观问题 No appearance problems affecting function	外观无异常 No abnormality in appearance	OK
32#		外观无异常 No abnormality in appearance	OK
33#		外观无异常 No abnormality in appearance	OK
34#		外观无异常 No abnormality in appearance	OK
35#		外观无异常 No abnormality in appearance	OK
36#		外观无异常 No abnormality in appearance	OK
37#		外观无异常 No abnormality in appearance	OK
38#		外观无异常 No abnormality in appearance	OK
39#		外观无异常 No abnormality in appearance	OK
40#		外观无异常 No abnormality in appearance	OK

样品编号 Samples No.	测试要求 Test requirement	瞬断测试结果 circuit continuity test result	结果判定 Verdict
31#	瞬时切断监控: 瞬断 < 1μs, 电阻 100mΩ Max。 Instantaneous cut-off monitoring: instantaneous cut-off < 1μs, resistance 100mΩ Max	瞬断 < 1μs, 电阻 100mΩ Max。	OK
32#		瞬断 < 1μs, 电阻 100mΩ Max。	OK
33#		瞬断 < 1μs, 电阻 100mΩ Max。	OK
34#		瞬断 < 1μs, 电阻 100mΩ Max。	OK
35#		瞬断 < 1μs, 电阻 100mΩ Max。	OK
36#		瞬断 < 1μs, 电阻 100mΩ Max。	OK
37#		瞬断 < 1μs, 电阻 100mΩ Max。	OK
38#		瞬断 < 1μs, 电阻 100mΩ Max。	OK
39#		瞬断 < 1μs, 电阻 100mΩ Max。	OK
40#		瞬断 < 1μs, 电阻 100mΩ Max。	OK

除非另有说明, 本报告的结果仅对测试样品负责。未经本公司许可, 不得部分复制本报告, 但整份除外。

The results in this test report refer only to the samples tested unless otherwise stated. This test report cannot be reproduced, except in full, without prior written permission of the Company.

6.7.1: 耐热性 Heat resistance

试验标准: Series Pitch0.4H0.9 rear hatchback FPC/FFC connector
 Test Standard

试验条件: 适合 FPC/FFC 嵌合; 85±2°C的空气中; 放置 96小时; 再回到室温中放置 1-2 小时。
 Test Methods: Suitable for FPC/FFC chimeric; 85±2°C in the air; Leave for 96 hours; Return to room temperature and let sit for 1-2 hours.

试验设备: 恒温恒湿机 型号PTH-100-70-150 Constant temperature and humidity machine model PTH-100-70-150
 Test Equipment: 电阻测试仪 型号 RM3545 Resistance tester Model RM3545



样品编号 Samples No.	测试要求 Test requirement	测试结果 Test Result		结果判定 Verdict
		外观 appearance	接触电阻(mΩ) Contact resistance (mΩ)	
41	外观无异常, 接触电阻: 100mΩ Max. No abnormality in appearance, Contact resistance: 100mΩ Max.	无变形和损坏 No deformation and	28	PASS
42		无变形和损坏 No deformation and	32	PASS
43		无变形和损坏 No deformation and	31	PASS
44		无变形和损坏 No deformation and	27	PASS
45		无变形和损坏 No deformation and	29	PASS

除非另有说明, 本报告的结果仅对测试样品负责。未经本公司许可, 不得部分复制本报告, 但整份除外。

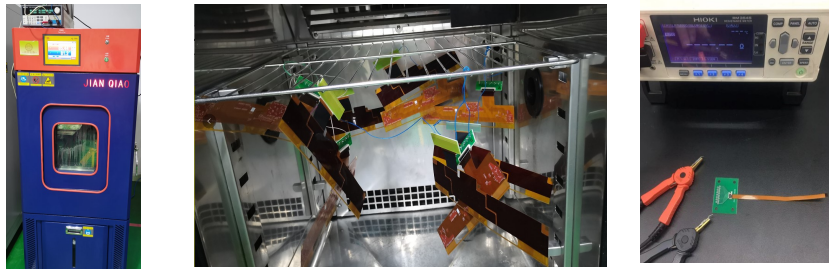
The results in this test report refer only to the samples tested unless otherwise stated. This test report cannot be reproduced, except in full, without prior written permission of the Company.

6.8.1: 耐寒性 Cold tolerance

试验标准: Series Pitch0.4H0.9 rear hatchback FPC/FFC connector
 Test Standard

试验条件: 适合 FPC/FFC 嵌合; $-40\pm 3^{\circ}\text{C}$ 的空气中; 放置 96 小时; 再回到室温中放置 1-2 小时。
 Test Methods: Suitable for FPC/FFC chimeric; $-40\pm 3^{\circ}\text{C}$ in the air; Leave for 96 hours; Return to room temperature and let sit for 1-2 hours.

试验设备: 恒温恒湿机 型号 PTH-100-70-150 Constant temperature and humidity machine model PTH-100-70-150
 Test Equipment: 电阻测试仪 型号 RM3545 Resistance tester Model RM3545



样品编号 Samples No.	测试要求 Test requirement	测试结果 Test Result		结果判定 Verdict
		外观 appearance	接触电阻(mΩ) Contact resistance (mΩ)	
46#	外观无异常, 接触电阻: 100mΩ Max. No abnormality in appearance, Contact resistance :100mΩ Max.	无变形和损坏 No deformation and	33	PASS
47#		无变形和损坏 No deformation and	31	PASS
48#		无变形和损坏 No deformation and	32	PASS
49#		无变形和损坏 No deformation and	28	PASS
50#		无变形和损坏 No deformation and	30	PASS

除非另有说明, 本报告的结果仅对测试样品负责。未经本公司许可, 不得部分复制本报告, 但整份除外。

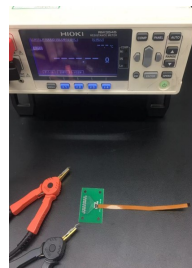
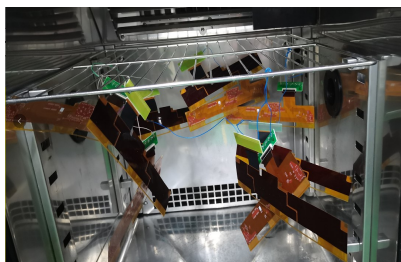
The results in this test report refer only to the samples tested unless otherwise stated. This test report cannot be reproduced, except in full, without prior written permission of the Company.

6.9.1: 耐湿性 Moisture resistance

试验标准: Series Pitch0.4H0.9 rear hatchback FPC/FFC connector
 Test Standard

 试验条件: 适合 FPC/FFC 嵌合; 40±2℃、相对湿度 90-95%的空气中; 放置 96 小时; 再回到室温中 1-2 小时内测定
 Test Methods: in the air of Temperature 40 ± 2 °C and 90-95% relative humidity for 96 hours;to return to room temperature for 1-2 hours in the place

 试验设备: 恒温恒湿机 型号PTH-100-70-150 Constant temperature and humidity machine model PTH-100-70-150
 Test Equipment: 电阻测试仪 型号 RM3545 Resistance tester Model RM3545
 耐压绝缘测试仪 型号7112AC Voltage insulation tester Model 7112AC



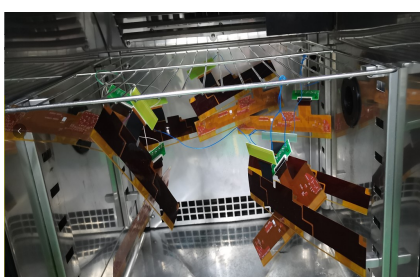
样品编号 Samples No.	测试要求 Test requirement	测试结果 Test Result		结果判定 Verdict
		外观 appearance	接触电阻(mΩ) Contact resistance(mΩ)	
51#	外观无异常, 接触电阻:100mΩ Max. No abnormality in appearance, Contact resistance 100mΩ Max..	无变形和损坏 No deformation and damage	32	PASS
52#		无变形和损坏 No deformation and damage	31	PASS
53#		无变形和损坏 No deformation and damage	30	PASS
54#		无变形和损坏 No deformation and damage	34	PASS
55#		无变形和损坏 No deformation and damage	35	PASS

样品编号 Samples No.	测试要求 Test requirement	测试结果 Test Result		结果判定 Verdict
		耐电压 Withstand voltage	绝缘电阻(MΩ) Insulation resistance (MΩ)	
51#	绝缘电阻: 500MΩ Min . Insulation resistance 500MΩ Min. 耐电压AC150V历时1分钟: 无击穿现象. Withstand voltage AC150V for 1 min: no breakdown phenomenon.	无击穿现象 Non-breakdown phenomenon	>999MΩ	PASS
52#		无击穿现象 Non-breakdown phenomenon	>999MΩ	PASS
53#		无击穿现象 Non-breakdown phenomenon	>999MΩ	PASS
54#		无击穿现象 Non-breakdown phenomenon	>999MΩ	PASS
55#		无击穿现象 Non-breakdown phenomenon	>999MΩ	PASS

除非另有说明, 本报告的结果仅对测试样品负责。未经本公司许可, 不得部分复制本报告, 但整份除外。
 The results in this test report refer only to the samples tested unless otherwise stated. This test report cannot be reproduced, except in full, without prior written permission of the Company.

6.10.1: 温度循环 Temperature cycle

试验标准: Series Pitch0.4H0.9 rear hatchback FPC/FFC connector
 Test Standard
 试验条件: 适合FPC/FFC嵌合; -40±3°C 30分钟; 常温常湿 10~15分钟; 85±2°C 30分钟; 常温常湿 10~15分钟, 循环5次。
 Test Methods: Suitable for FPC/FFC chimeric; -40±3°C for 30 min; Normal wet 10 to 15 minutes; 85±2°C for 30 min; 10~15 minutes of normal wet, cycle 5 times.
 试验设备: 恒温恒湿机 型号PTH-100-70-150 Constant temperature and humidity machine model PTH-100-70-150
 Test Equipment: 电阻测试仪 型号 RM3545 Resistance tester Model RM3545
 耐压绝缘测试仪 型号7112AC Voltage insulation tester Model 7112AC



样品编号 Samples No.	测试要求 Test requirement	测试结果 Test Result		结果判定 Verdict
		外观 appearance	接触电阻(mΩ) Contact resistance(mΩ)	
56#	外观无异常, 接触电阻:100mΩ Max. No abnormality in appearance, Contact resistance:100mΩ Max.	无变形和损坏 No deformation and	29	PASS
57#		无变形和损坏 No deformation and	28	PASS
58#		无变形和损坏 No deformation and	32	PASS
59#		无变形和损坏 No deformation and	31	PASS
60#		无变形和损坏 No deformation and	29	PASS

除非另有说明, 本报告的结果仅对测试样品负责。未经本公司许可, 不得部分复制本报告, 但整份除外。

The results in this test report refer only to the samples tested unless otherwise stated. This test report cannot be reproduced, except in full, without prior written permission of the Company.

6.11.1: 耐盐雾 Salt spray resistance

试验标准: Series Pitch0.4H0.9 rear hatchback FPC/FFC connector
 Test Standard
 试验条件: 适合 FPC/FFC 嵌合; 35±2°C、5±1%的盐水喷雾(Sn 24H Au 48H); 试验后常温水洗; 再室温干燥, 常
 Test Methods: 常湿放置 1-2 小时。
 Mate applicable FPC/FFC. (Sn 24 Au48H)exposure to a salt spray from 5±1% solution at 35±2°C . Use water
 试验设备: 电阻测试仪 型号 RM3545 Resistance tester Model RM3545
 Test Equipment 盐雾试验机 型号HWS-002 Salt spray testing machine Model HWS-002



样品编号 Samples No.	测试要求 Test requirement	测试结果 Test Result		结果判定 Verdict
		外观 appearance	接触电阻(mΩ) Contact resistance	
61#	外观无异常, 接触电阻: 100mΩ Max. No abnormality in appearance, Contact resistance: 100mΩ Max..	无变形和损坏 No deformation and	32	PASS
62#		无变形和损坏 No deformation and	31	PASS
63#		无变形和损坏 No deformation and	33	PASS
64#		无变形和损坏 No deformation and	30	PASS
65#		无变形和损坏 No deformation and	34	PASS

除非另有说明, 本报告的结果仅对测试样品负责。未经本公司许可, 不得部分复制本报告, 但整份除外。

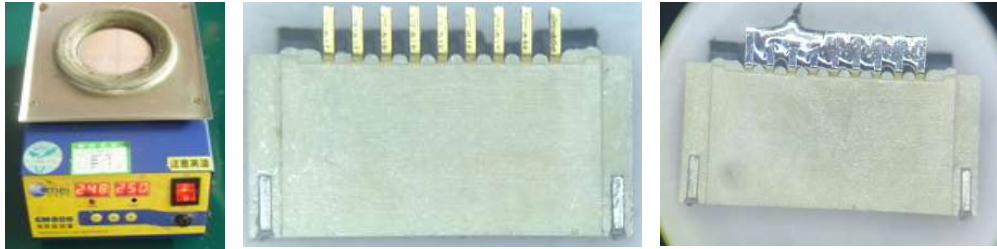
The results in this test report refer only to the samples tested unless otherwise stated. This test report cannot be reproduced, except in full, without prior written permission of the Company.

6.12.1: 可焊性 weldability

试验标准: Series Pitch0.4H0.9 rear hatchback FPC/FFC connector
 Test Standard

 试验条件: 端子前端基准面 0.2mm 处浸入 250±5°C的锡槽中; 历时 2±0.5 sec。
 Test Methods: Soldering time: 2±0.5 sec Soldering temperature: 250±5°C

 试验设备: 无铅高温锡炉 型号CM808 Lead-free high temperature tin furnace model CM808
 Test Equipment



样品编号 Samples No.	测试要求 Test requirement	测试结果 (N) Test Result (N)	结果判定 Verdict
66#	沾锡面积 95%以上 Soldering area more than 95%	沾锡面积 > 95% Tin-stained area > 95%	PASS
67#		沾锡面积 > 95% Tin-stained area > 95%	PASS
68#		沾锡面积 > 95% Tin-stained area > 95%	PASS
69#		沾锡面积 > 95% Tin-stained area > 95%	PASS
70#		沾锡面积 > 95% Tin-stained area > 95%	PASS

除非另有说明, 本报告的结果仅对测试样品负责。未经本公司许可, 不得部分复制本报告, 但整份除外。

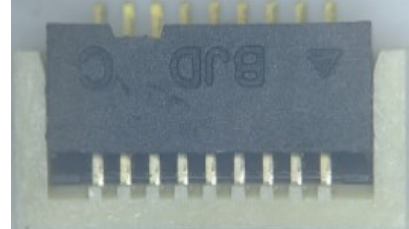
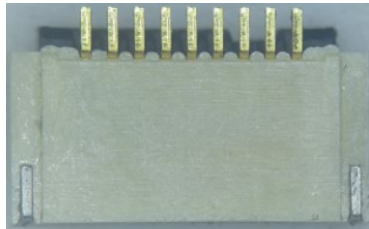
The results in this test report refer only to the samples tested unless otherwise stated. This test report cannot be reproduced, except in full, without prior written permission of the Company.

6.13.1: 耐焊热 Resistance to welding heat

试验标准: Series Pitch0.4H0.9 rear hatchback FPC/FFC connector
 Test Standard

试验条件: 高温烤箱 260±5°C,60 秒。
 Test Methods: Soldering temperature 260±5°C,60sec.

试验设备: 烤箱 型号TH8011B Oven model TH8011B
 Test Equipment



样品编号 Samples No.	测试要求 Test requirement	测试结果 Test Result	结果判定 Verdict
71#	端子、后盖和连接器应无变形和损坏 Terminals, rear cover, and connectors should be free from distortion or damage	无变形和损坏 No deformation and damage	PASS
72#		无变形和损坏 No deformation and damage	PASS
73#		无变形和损坏 No deformation and damage	PASS
74#		无变形和损坏 No deformation and damage	PASS
75#		无变形和损坏 No deformation and damage	PASS

除非另有说明, 本报告的结果仅对测试样品负责。未经本公司许可, 不得部分复制本报告, 但整份除外。

The results in this test report refer only to the samples tested unless otherwise stated. This test report cannot be reproduced, except in full, without prior written permission of the Company.